



Universal Travel Adaptor Kit

Model Number: ATAK-1118

INSTRUCTION MANUAL

AFTER SALES SUPPORT

 (AUS) 1300 886 649

 www.tempo.org

Model: ATAK-1118 Product Code: 61924 11/2018



Welcome

Congratulations on choosing to buy a Bauhn® product.

All products brought to you by Bauhn® are manufactured to the highest standards of performance and safety, and are backed by our comprehensive 1 Year Warranty.

We hope you will enjoy using your purchase for many years to come.

Version Number	1.0
Date	11/2018

Contents

Welcome	2
General Safety Instructions	4
Countries List	6
Instructions	8
Troubleshooting	9
Warranty Details	10
Repair and Refurbished Goods or Parts Notice	11

General Safety Instructions

Read this manual thoroughly before first use and keep it for future reference. These safety precautions reduce the risk of fire, electric shock and injury when correctly adhered to.

This product complies with Australian Safety standard AS/NZS 3105 to ensure the safety of the product.



The RCM is a visible indication of a product's compliance with all applicable ACMA regulatory arrangements, including all technical and record-keeping requirements.

- **Protect from moisture:** Do not immerse the cord, plug, adaptors or the powerboard itself in water or other liquid, or expose the electrical connections to water. Do not touch the power plug with wet hands.
- **Damage:** If the cord, plug, adaptors or powerboard are damaged, contact the after sales support line for advice. Do not attempt to open any part or replace the cord. The cord must be replaced by appropriately qualified personnel.
- **Protect the power cord:** Do not let the cord touch any hot surface. Do not allow anything to rest on or roll over the power cord. Run any cords so no one steps on or trips over them. Do not run the cord near heat-producing appliances such as radiators or stoves. Only use this travel adaptor kit with the power supply cord fully unwound.
- **Usage restriction:** The equipment is not intended for use by persons (including children) with reduced physical, sensory or mental capabilities, or lack of experience and knowledge, unless they have been given supervision or instruction concerning use of the equipment by a person responsible for their safety.
- **Children:** Young children should be supervised to ensure they do not play with the equipment. Close supervision is always necessary when any electrical equipment is used by or near children.
- **Domestic indoor use only:** This travel adaptor kit is designed for indoor use in dry places only.
- **Before installing the unit, make sure to place it AWAY from:**
Heat sources, radiators or other products that produce heat.
Areas with high temperatures, high humidity or direct sunlight.
Excess dirt and dust.
Open windows and any place where water may get to the unit.
- **Disconnect:** Unplug the powerboard when it is not going to be used. Grasp the plug, not the cord, when disconnecting.
- The MAINS plug or an appliance coupler is used as the disconnect device, the disconnect device shall remain readily operable.
- When the product is not in use, disconnect it from the power source and store in a cool, dry and well ventilated location out of direct sunlight. Ensure that it is not subject to humidity.
- **Repair:** If the unit requires repair, contact the after sales support line; never disassemble or modify the unit or attempt to service it yourself.
- **Liability:** We accept no liability for any damage caused by non-compliance with these instructions or mishandling of the equipment.

General Safety Instructions

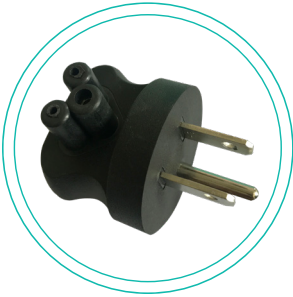
Responsible disposal of the packaging

The packaging of your product has been selected from environmentally friendly materials and can usually be recycled. Please ensure these are disposed of correctly. Plastic wrapping can be a suffocation hazard for babies and young children, please ensure all packaging materials are out of reach and are safely disposed of. Please ensure they are offered for recycling rather than throwing these materials away.

Responsible disposal of the product

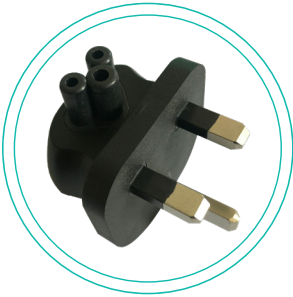
At the end of its working life, do not throw this product out with your household rubbish. An environmentally friendly method of disposal will ensure that valuable raw materials can be recycled. Contact your local authority for your nearest recycling centre. Electrical and electronic items contain materials and substances which, if handled or disposed of incorrectly, could potentially be hazardous to the environment and human health.

Countries List



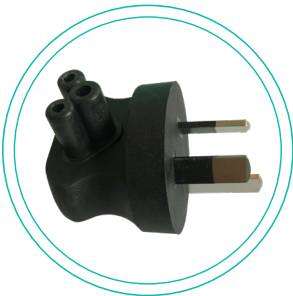
American/Asian Adaptor

Suitable for: American Samoa, Aruba, Bahamas, Barbados, Bermuda, British Virgin Islands, Belize, Canada, Cayman Islands, Colombia, Costa Rica, Cuba, Dominican Republic, Ecuador, El Salvador, Guam, Guatemala, Guyana, Haiti, Honduras, Jamaica, Japan, Laos, Lebanon, Liberia, Mexico, Micronesia, Montserrat, Netherlands Antilles, Nicaragua, Niger, Okinawa, Palau, Panama, Philippines, Puerto Rico, Taiwan, Thailand, Turkmenistan, United States, Venezuela.



UK/Hong Kong Adaptor

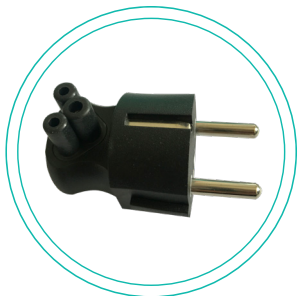
Suitable for: Bahrain, Bangladesh, Belize, Bhutan, Botswana, Brunei, Cambodia, Cyprus, Dominica, Falkland Islands, Gambia, Ghana, Gibraltar, Grenada, Guyana, Hong Kong, Iraq, Ireland, Isle of Man, Jordan, Kenya, Kuwait, Lebanon, Macau, Malawi, Malaysia, Maldives, Malta, Mauritius, Nigeria, Oman, Pakistan, Qatar, St.Kitt-Nevis, St.Lucia, St.Vincent, Saudi Arabia, Seychelles, Sierra Leone, Singapore, Solomon Islands, Tanzania, Uganda, United Arab Emirates, United Kingdom, Vanuata, Yemen, Zambia, Zimbabwe.



Australian Adaptor

Suitable for: Australia, New Zealand, Fiji, Tonga, Solomon Islands, Cook Islands, China, Argentina, Uruguay, Uzbekistan and Papua New Guinea.

Countries List (Cont.)



Asian/European Adaptor

Suitable for: Albania, Algeria, Armenia, Angola, Andorra, Austria, Azerbaijan, Balearic Islands, Bangladesh, Belgium, Bolivia, Bosnia, Brazil, Bulgaria, Burkina Faso, Burundi, Cameroon, Cape Verde, Central African Republic, Chad, Chile, China, Comoros, Congo, Croatia, Rep. Of Congo (Zaire), Cote d'Ivoire (Ivory Coast), Denmark, Djibouti, Egypt, Equatorial Guinea, Eritrea, Estonia, Faroe Islands, Finland, France, French Guiana, Gabon, Georgia, Germany, Gibraltar, Greece, Greenland, Guadeloupe, Guinea-Bissau, Hungary, Iceland, India, Indonesia, Iran, Iraq, Isle of Man, Israel, Italy, Jordan, Kazakhstan, Korea, Kuwait, Laos, Lebanon, Liberia, Libya, Lithuania, Luxembourg, Macedonia, Madagascar, Madeira, Mali, Martinique, Mauritania, Mauritius, Monaco, Morocco, Mozambique, Nepal, Netherlands, Niger, Norway, Oman, Pakistan, Paraguay, Peru, Philippines, Poland, Portugal, Romania, Russia, Rwanda, St. Vincent, Senegal, Serbia, Slovakia, Slovenia, Somalia, Spain, Sudan, Suriname, Sweden, Switzerland, Syria, Thailand, Togo, Tunisia, Turkey, Uruguay, Vietnam, Zambia.

IMPORTANT NOTE!

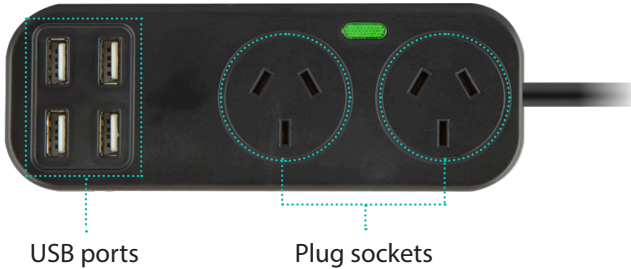
Some countries may utilise more than one type of plug.

Please double-check each area **before** you travel.

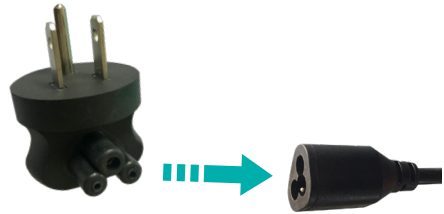
This adaptor does not convert voltage or mains frequency (50Hz, 60Hz). Please check the supply voltage/frequency and the voltage/frequency required by your appliance. **If they differ, then an appropriate transformer must be used.**

Instructions

The dual powerboard fits two Australian plugs and four USB ports.



- Insert your appliances firmly into the appropriate sockets.
- Insert the appropriate adaptor plug into the adaptor socket (see illustration to the right), making sure it clicks securely into place.
- Insert the adaptor prongs into a wall socket.



This product can charge devices via USB up to 3.1A in total. When you connect two or more products that require more than 3.1A, the adaptor may cut off power to the USB ports. If this occurs, unplug one of your devices and the adaptor will continue charging the other connected device(s).

The table below lists the charging current of some commonly used devices.

iPad, tablet computer, big screen smart phone	2A - 3A
iPod, small screen smart phone, wireless speaker	1A - 2A
Small MP3 player, wireless headphone	0.5A - 1A

IMPORTANT!

This product is only to be used for low wattage devices not exceeding 720W.

Product Specifications

Power supply input	AC 240V, 50Hz
Input power consumption	740W Max
USB output port	DC 5V, Total 3.1A Max.
Plug sockets	AC 240V, total 3A 720W Max.

Troubleshooting

If you encounter a problem with this product, see the list below for a solution. If you don't find a solution here, contact After Sales Support for advice.

Problem:	Try this solution:
No power output from any of the sockets.	<ul style="list-style-type: none">• See if the green indicator light on the powerboard is on. If it's off, make sure the plug adaptor is firmly connected to the socket in one end of the powerboard wire.• Make sure the plug is firmly connected to the wall socket.• Check if the wall socket has power output.• Try other adaptor plugs to see if they work.
No power output from just one of the sockets.	<ul style="list-style-type: none">• Try other sockets; if other sockets have power output, the issue could be that the contact of the faulty socket is loose or not connected.
USB charging is very slow.	<ul style="list-style-type: none">• The total power output of USB ports is limited to 3.1A and some devices require a high amount of charging power. If you connect multiple devices to the USB ports, it may slow down the charging speed. Try disconnecting some devices and only charge one or two devices at the same time.• Make sure the USB cable is firmly plugged into the USB port.• Some USB cables have limited charging power; try a different USB cable to see if it improves.
USB charging is not working at all.	<ul style="list-style-type: none">• Check if the powerboard is correctly connected to the mains input, and the green indicator is on.• Make sure the USB cable is firmly plugged into the USB port.• Try other USB ports.• Try using a different USB cable.



Universal Travel Adaptor Kit

Warranty Details

REGISTER YOUR PURCHASE AT www.aldi.com.au/en/about-aldi/product-registration TO KEEP UPDATED WITH IMPORTANT PRODUCT INFORMATION

The product is guaranteed to be free from defects in workmanship and parts for a period of 12 months from the date of purchase. Defects that occur within this warranty period, under normal use and care, will be repaired, replaced or refunded at our discretion. The benefits conferred by this warranty are in addition to all rights and remedies in respect of the product that the consumer has under the Competition and Consumer Act 2010 and similar state and territory laws.

Our goods come with guarantees that cannot be excluded under the Australian Consumer Law. You are entitled to a replacement or refund for a major failure and to compensation for any other reasonably foreseeable loss or damage. You are also entitled to have the goods repaired or replaced if the goods fail to be of acceptable quality and the failure does not amount to a major failure.

AFTER SALES SUPPORT

 (AUS) 1300 886 649

 www.tempo.org

Model: ATAK-1118 Product Code: 61924 11/2018





Universal Travel Adaptor Kit

Repair and Refurbished Goods or Parts Notice

Unfortunately, from time to time, faulty products are manufactured which need to be returned to the supplier for repair.

Please be aware that if your product is capable of retaining user-generated data (such as files stored on a computer hard drive, telephone numbers stored on a mobile telephone, songs stored on a portable media player, games saved on a games console or files stored on a USB memory stick) during the process of repair, some or all of your stored data may be lost. **We recommend you save this data elsewhere prior to sending the product for repair.**

You should also be aware that rather than repairing goods, we may replace them with refurbished goods of the same type or use refurbished parts in the repair process.

Please be assured though, refurbished parts or replacements are only used where they meet ALDI's stringent quality specifications.

If at any time you feel your repair is being handled unsatisfactorily, you may escalate your complaint. Please telephone us on 1300 886 649 or write to us at:

Tempo (Aust) Pty Ltd ABN 70 106 100 252
PO Box 6056, Frenchs Forest, NSW 2086, Australia
Tempo Help Desk: 1300 886 649 (Aust)
(Operating Hours: Mon-Fri 08:30AM to 06:00PM, Sat 09:00AM - 06:00PM EST)
Email: info@tempo.org

AFTER SALES SUPPORT

  1300 886 649

 www.tempo.org

Model: ATAK-1118 Product Code: 61924 11/2018





Warranty returns

Should you for any reason need to return this product for a warranty claim, make sure to include all accessories with the product.

Product does not work?

If you encounter problems with this product, or if it fails to perform to your expectations, make sure to contact our After Sales Support Centre on 1300 886 649 before returning it to the store for a refund.